



August/September 2008

Special points of interest:

- Welcome from the principal

Inside this issue:

Registration and Important dates 2

Things you should know & dress code 3

Attendance procedures & bus information 4

Physical Ed & calculators 5

Lunch accounts and healthcare 6

Goodbye CP hello PowerSchool, ELL test and Equity Statement 7

**Gregg Shultz**  
Principal

**Carla Krogman**  
Associate Principal



## Welcome to Northwest!

Welcome to all parents and students to the 2008-09 school year at Northwest Junior High School. The beginning of a new school year is always an exciting time, but it can be especially so for the 50% of our students who are new to Northwest. Unlike elementary or even high school, the junior high experience only lasts for two years. For this reason, we like to get students fully engaged in academics and school activities as soon as possible. This newsletter will help you get the year off on a positive note.

The new school year looks much like the previous ones. Thankfully, our building was not affected by the floods, though the school was used as a shelter and I know that some Northwest families and faculty members are still recovering from their own personal losses. The start of the year always brings a familiar routine to households, and I hope that the rhythm of this school year provides structure and support as our community continues to recover from the floods of 2008.

We begin the year with 615 students and 34 full-time and 14 part-time teachers. The school will continue to be organized into

4 teams, each consisting of approximately 150 students. Assignments to teams are done randomly, and all students work with a common core group of teachers who share a common planning time. In 7th grade, the core group of team teachers consists of a social studies teacher, a science teacher, a language arts teacher, a literacy teacher, a special education teacher and a counselor. In 8th grade, the core teachers are science, social studies, language arts, special education, and a school counselor. In keeping with the school mascot, the Viking, the team names are adopted from figures in Norse mythology—Team Loki and Team Vor for 7th grade and Team Thor and Team Odin for 8th grade. Students receive their team assignments during registration, which is held on August 12th.

In addition, students are assigned to a counselor; Michele Sadler works with students whose last names begin with the letters A-L, and John Cooper works with students whose last names begin with M-Z.

With very few exceptions, students are scheduled into the courses they requested. In a few cases, students may not have received elective courses that they requested because of scheduling conflicts.

Please find enclosed a copy of the parent handbook and sports information packet. A listing of all key school events, including sports schedules, is also included. As parents, please take time to read the parent handbook and discuss key points with your son or daughter. It is particularly helpful for all families to look closely at the student dress code, as it is often a point of contention at the beginning of school. Any questions about school policies or procedures will be addressed at our parent orientation meeting on August 13th at 5:30 p.m.

I wish everyone a pleasant conclusion to the summer, and I thank all parents for the trust you have shown in allowing your child to attend Northwest. On behalf of the staff, we look forward to working with you this school year.

# Registration



On Tuesday, August 12th students report to the multi-purpose room to pay fees, have their picture taken, and pick up their schedules, assignment notebooks and locker assignments. There is also time to walk around the school and get used to the building at their own pace. Parents are welcome to accompany their child.

Counselors will be available to discuss any schedule problems.

**Seventh graders** should come between **8:15 and 11:00 am**.

**Eighth graders** should come between **12:00 and 2:30 pm**.

Please come dressed appropriately for your yearbook picture and bring the enclosed enrollment card with emergency information and an appropriate check made out to Northwest Jr. High. Registration will not be considered complete until the emergency information is submitted and fees are paid.

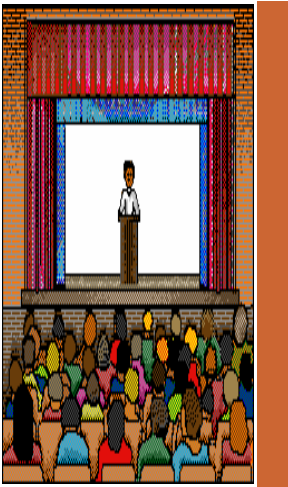
### Fees

All students pay \$45.00, plus an additional \$15.00 if they are tak-

ing a world language. Optional P.S.T.O. dues are \$10.00 and Jr. High athletic passes are \$25.00. The fees are for instructional supplies used in the courses. Additional fees may be assessed for special optional projects, items or activities.

If you wish, or are uncertain of the amount needed feel free to send a signed check, made out to Northwest Jr. High, and our parent volunteers will fill in the amount.

# Important Dates



### 7th grade Orientation

We are also pleased to offer an orientation session for all 7th grade students on Thursday, **August 14th from 1:00-2:45 pm**. At this session, we hope to help ease the transition between 6th and 7th grade by offering students another chance to find their classes, open their lockers and receive some good information for success in junior high.

### Parent Orientation Night

Orientation night for parents of all new students is on Wednesday, **August 13th from 5:30 pm to 6:30 pm**.

### Directory Information

The Parent, Student, Teacher Organization (PSTO) will again produce a student directory. If you **do not** wish to have this information made available, you must make your objection known in writing to the principal, by **Friday, September 5th**.

### Back-To-School Night

Back-To-School-Night is Wednesday, **September 3rd from 7:00 pm to 8:30 pm**. Parents and guardians attend classes, meet teachers, and receive information about their child's courses. Please mark your calendar now so you can join us!

### Advanced Math Placement Test

Advanced math placement tests are administered on **Friday, August 8th at 1:00 pm** in the LMC for 8th graders wishing to advance beyond their normal sequence. Tests are scored by the district Math Coordinator, and results and placements will be made available as soon as possible.

### Pictures

If you wish to buy pictures and a yearbook, bring the picture package envelope previously mailed to you with a check for the correct amount made out to **Halvorsen Photography**. All students must have their picture taken whether or not they choose to buy a picture package as the pictures are used in the yearbook and on the student ID cards.

---

## Things you should know

### Backpacks

Students may use backpacks to transport items to and from school, but all bags and backpacks must be stored and kept in the student's locker. No bags or backpacks will be allowed in the classrooms or lunchrooms. Female students will be allowed to carry small purses, no larger than approximately 6 inches square, to carry personal care items.

### Cell Phones

The use of cell phones, pagers, beepers, and other similar communication devices is **prohibited** during the school day. Items in use during this time will be confiscated.

### CD players, MP3's, Electronic games

Students are requested to refrain from bringing electronic devices to school. Use of these items is prohibited during class time. Please leave these items at home as they are targets for theft or breakage.

### Tobacco/Drugs/Alcohol

The use or possession of tobacco products, drugs and alcohol is not permitted in the school building, on school grounds, school buses, or at any school sponsored activity. Any student who uses tobacco, drugs, or alcohol, or gives the impression of using the mentioned items, or has them in his/her

possession, will be subject to school disciplinary actions.

### School Supplies

We suggest that you wait to purchase school supplies until after individual teachers have informed students about specific school materials needs. Students should bring a pencil and notebook paper to school on the first day. A general material list is included in this mailing for your information in the event that you want to make some preliminary purchases.

---

## Dress

The major responsibility for appropriate dress and grooming rests with the students and their parents. An individual's appearance and dress can greatly influence that individual's self-image and behavior as well as that of others. Students are expected to dress and groom themselves in a way that is not offensive or distracting to students and/or faculty.

Students are expected to dress appropriately for school and all related activities (including parties, sports events, music events, etc.) A student's attire may not unreasonably infringe on the rights of other students to benefit from a productive educational environment, or adversely impact the health, safety, welfare, or property rights of others.

We recognize that attire acceptable outside the school setting may not be considered appropriate in schools. Students may not wear or display at school or school activities attire which is deemed disruptive to the school environment or unreasonably infringes on others' rights to health, safety, welfare or property. If clothing is deemed disruptive or unreasonably infringes on others' rights, the offending student will be required to correct the situation. Depending on the situation, the student may also suffer consequences.

The following list includes examples of clothing which is considered disruptive or clothing which unreasonably infringes on others' rights to health, safety, welfare or property, and is NOT ALLOWED:

\*Masks, hoods, hats or sunglasses

Northwest students may not wear hats in the building unless medical or religious reasons exist which have been approved by administrators prior to wearing the hat. Disruptions to the learning environment caused by students behaviors related to hats warrants this position (stealing hats, throwing hats in the hallways and classes, knocking hats off, etc.)

\*Bare midriffs, chests, or torsos

\*Back-less or strapless attire

\*Thin T-shirts worn over colored undergarments

\*Pants, slacks, or shorts worn below the hips

\*Clothing or accessories that

-promote the use of alcohol or drugs

-include profane or offensive language or pictures, or

-include sexually inappropriate or racially biased material or references

When a commercial line of apparel is judged to have such a high proportion of unacceptable imprints that a case by case review of each item would disrupt the orderly activity of the school, then a complete ban of the line of apparel will be made.

\*Students ARE REQUIRED to wear shoes or sandals at all times during school.

If there are medical or religious reasons to make an exception to these rules, the parents must request an exception. Such an exception must be approved by the administrators before the student can wear attire which is an exception to these rules. Heelis (tennis shoes with wheels) are **not** permitted.

## Attendance Procedures

Mandates outlined by the No Child Left Behind legislation has prompted a few changes to the way we handle student absences in the Iowa City School District. Under this new legislation, schools are now required to demonstrate a 95% attendance rate. In order to help parents better support this goal, the following procedures will be used when considering whether an absence is excused or unexcused:

### **Acceptable Excuses for Absences and Tardies As Indicated By the Iowa City Community School District**

The school attendance officer is empowered to approve an excuse to any student for the following reasons:

Evidence that the student is not in proper physical or mental condition to attend school or an educational program.

The district may request the parent or guardian to obtain a written statement from a physician or licensed practitioner as proof of the physical or mental condition of the student. Such excuse shall be made in writing, shall state the period of time for which it is valid, and shall not exceed 30 days.

Medical, dental, chiropractic, optometric or other valid professional appointments. Parents or guardians are requested to make their appointments during non-school hours.

A death in the immediate family or funerals for close relatives.

Religious holidays.

Family trips that can be taken only during the normal school term. The intent of this statement is to provide opportunity for students to accompany their parent(s)/guardian on a vacation which cannot be scheduled when school is not in session. A parent/guardian shall be required to notify the school attendance officer prior to leaving on vacation of the pending absence for the purpose of reviewing the student's attendance record and overall performance record. Student vacations or trips without parent/guardian accompaniment are not excused absences.

A court appearance or other legal procedure which requires the attendance of the student.

A quarantine as imposed by a public health officer.

Attendance at special events of educational value as approved by the school attendance officer.

Approved school activities during class time.

Special circumstances that show good cause which the school attendance officer approves in advance.

## Bussing and Traffic

In order to protect our students and to alleviate the traffic problems caused by "pick ups" and "drop-offs," a special lane is in place in the South parking area. ONLY buses will be using the lane immediately in front of the school building. All other traffic should use the additional lane. Please observe the BUS ONLY rule for the safety of our children.

To minimize traffic in the main south lots it is recommended that you pick-up your child in the North parking lot after school if you are doing so during the rush period from 3:15-3:40 pm.



# PHYSICAL EDUCATION



Students are required to wear special clothing to physical education classes. We feel that the following requirements allow for greatest ease of movement, and for safety (no buckles, belt loops, etc. to catch or snag on equipment) and are designed specifically for PE class. We ask that students not wear their regular school clothing to PE due to the extra wear and tear on the clothing as well as for personal hygiene reasons. Students are encouraged to write their name on all pieces of clothing for easy identification.

The following clothing is required for PE class:

1. A regular T-shirt, long or short sleeved. Regular T-shirts do not have buttons, zippers, etc., and are not turtle necks.
2. Regular GYM SHORTS with an elastic or drawstring waist. No zippers, belts, or belt loops, and buttons, etc. Spandex may be worn under the gym shorts.
3. SOCKS
4. TENNIS SHOES with shoe laces or velcro closers. No other type will be permitted for activity on the gym floor. Shoes should be the type of tennis shoe that will be comfortable when running.
5. Sweat pants and sweat shirts are recommended for cooler outdoor weather.
6. Swimming suits (one piece suits for girls).
7. Students must provide their own PE towel. Towels are needed when students swim and when activities require showering after participation.

T-SHIRT MUST HAVE THE OWNER'S LAST NAME DISPLAYED PERMANENTLY ON THE BACK WHERE IT MAY BE EASILY READ. ONE INCH LETTERS WORK WELL. MASKING TAPE IS NOT CONSIDERED PERMANENT.

IT IS RECOMMENDED THAT THE STUDENT'S NAME BE PLACED ON ALL CLOTHING ARTICLES.

CLEAN "LOANER" CLOTHING MAY BE AVAILABLE FROM THE PE STAFF FOR STUDENTS WHO DO NOT HAVE THE PROPER CLOTHING OR WHO FORGET THEIR PE CLOTHES. WE ALSO HAVE A VERY LIMITED SUPPLY OF TENNIS SHOES AVAILABLE.



## TI-30XIIS CALCULATORS

The math department is strongly recommending that this year's students purchase Texas Instruments TI-30XIIS calculators. This particular calculator was chosen for a variety of reasons. These calculators allow fraction computations, integer division, have a limited selection of keys, and will match the overhead calculators teachers use during their instructional presentations. The teachers have found it difficult for students to learn when their calculators do not match the demonstration model and do not perform the same functions.



## Lunch accounts



Junior high 7<sup>th</sup> grade students have the same school dining number they had in elementary school. All balances from last year carry over to the 2008-09. If your student is new to the district a unique five (5) digit identification number will be assigned in August. This number is entered when making either deposits or purchases. Students must memorize their number to help lunch service move more quickly. ID numbers should not be shared with anyone in the event another student uses the number and makes purchases on the account. Students have the same meal ID number as long as they are enrolled in our district. All students, regardless of payment status, can deposit money in their account for purchasing meals, milk only, and a la carte items (a la carte available at City, West, North Central, Northwest, and South East). Students qualifying for free meals need money in their accounts to buy milk or a la carte items; there is no charge for school meals. **No charging is allowed for secondary students so students must have money in their accounts to make a purchase.** We encourage families to use either a check or money order made out to: *Northwest Jr. High Food Service* when making deposits. **Change is not given back when deposits or purchases are made so send exact payments.** Transactions are made by verifying the student name appearing on the screen for that account number so there is never any identification of students by paying status.

There is a web site, <http://fs-pos.iccsd.k12.ia.us> where families can check account balances, look at purchase history, and sign up for email notifications regarding a student's account. **Our district does not have family accounts; each account is separate. Therefore, when logging into this site, you need an ID and password for each of your students.** If you are not already using this site, you can contact Jackie Andresen at [andresen.jackie@iccsd.k12.ia.us](mailto:andresen.jackie@iccsd.k12.ia.us) who will give you the information you need. There is also a link to the site, under the *school meals and nutrition* heading, on the district's home page at [www.iccsd.k12.ia.us](http://www.iccsd.k12.ia.us). The food service office can also be contacted with questions at 688-1254. Once your user name and password are entered, the name of the child linked to this user name and password will appear under the tab "your reports". You will need a user name and password for each child. At this time, account deposits cannot be made on line.

## Healthcare

It is the policy of the Board of Education of the Iowa City Community School System that whenever a student should have a prescription medication administered by personnel at school, written authorization and instruction must be provided by a parent or legal guardian. Only medication prescribed by a physician will be administered. The following information is to be clearly labeled on the bottle by the pharmacy.

1. Name of medicine
2. Dosage
3. Student's name
4. Physician's name

For long term medicine, do not send more than one month's supply. The school principal will authorize a staff member to administer the medication. If your doctor requests aspirin or other non-prescription medications to be given during school, please have your physician write the name of the drug, and dosage required for all non-prescription medications given at school.

Parent requests for non-prescription medications to be given at school cannot be accepted unless accompanied by a doctor's written order. This procedure will safeguard your child against over-medication and possible unforeseen reactions.

Your cooperation with this procedure is appreciated.



## Goodbye CenterPoint hello PowerSchool

Beginning this 2008-09 school year the ICCSD will be using **PowerSchool** as our student information system, replacing CenterPoint. You will be able to use PowerSchool Parent to check your student's grades and attendance, see whether or not homework has been turned in, access the school's daily bulletin, and read notes from your student's teachers. Your student can also use PowerSchool to see their grades, class assignments, and web links for their classes. Parents and students will receive separate ID's and passwords.

For those without Internet connections at home or work, you may access PowerSchool via the Internet at your public library or any site with public use computers with internet access.

Parent ID's and passwords will be mailed home the week of **SEPTEMBER 15, 2008**.

## Language Minority Junior High School Student Registration Information

**What:** English testing and registration for **NEW** junior high students who speak a language other than English.

**When:** Thursday, August 7<sup>th</sup> at 9:00 a.m.

**Where:** Northwest Junior High School, Temporary building in North parking lot behind building

**What to Bring:**

- Your child (parents must remain at the Center during this process.)
- Proof of birth (for student)
- Immunization records

Any educational history documents available

**How long:** 2 to 3 hours

**Schedule:**

- First:** Students will take the English Assessment.  
**Next:** Students will take a math placement test.  
**Last:** Students will meet with a counselor to choose their classes.

Please be on time; part of the English test will be given in a group.

Thank you. We look forward to seeing you.

**Note:** After August 7<sup>th</sup>, it will be necessary to call 688-1320 to schedule an individual time, or ask the counselor at the school to schedule a time for you.



## ICCSD Equity Statement

It is the policy of the Iowa City Community School District not to discriminate on the basis of race, creed, color, religion, national origin, gender, age, marital status, sexual orientation, gender identity, veteran status, disability, or socioeconomic status in its educational programs, activities, or employment practices.

If you believe you have (or your child has) been discriminated against or treated unjustly at school, please contact the Equity Director, [Ross Wilburn](#), at 509 S. Dubuque Street, 319-688-1000.